



01005

The new Ersa Hybrid Rework family

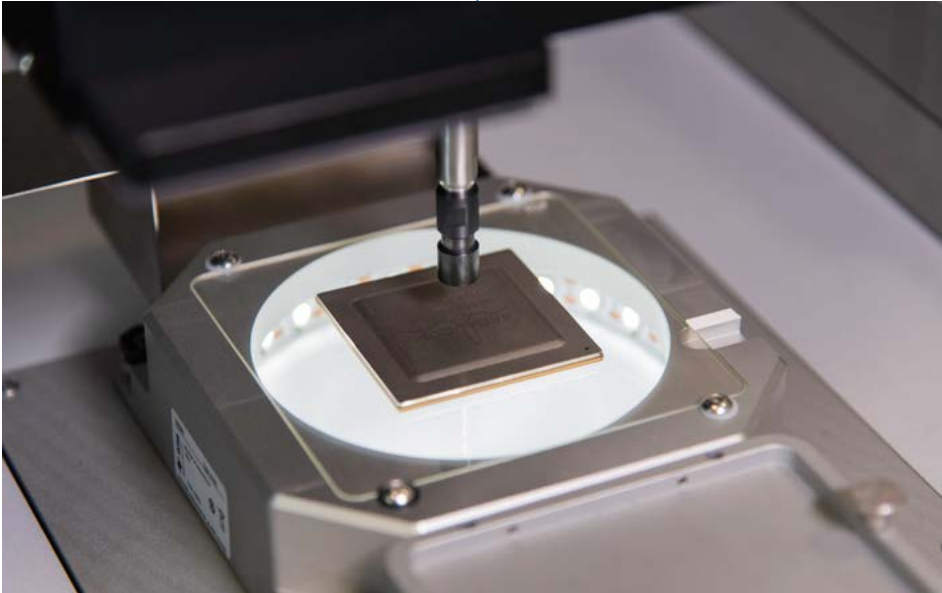
Rework Evolution!

Ersa has now been successfully active in the repair of electronic assemblies for more than 20 years. Since the introduction of the first units in 1997, several thousand rework systems and stations have been delivered and installed worldwide. With the presentation of the most recent family member at productronica 2019, Ersa

is underlining its strong position which is based on customer focus and consistent further development of the technology for the benefit of users. Today, Ersa Rework Systems are used in electronics production, product development, testing and analysis. Wherever they are used, they preserve the added value for customers.

Author
Jörg Nolte
Product Manager
Ersa GmbH

published in
productronica 11/2019
in Germany



LED light dome of the HR 600 XL with large metallic BGA ready for fully automatic placement.

Thanks to the constant new developments of electronics in all fields of industry, new soldering and repair tasks arise almost daily. The drivers for this are progressive miniaturization (chips of size 01005) and new technologies such as 5G with extremely powerful and sometimes very large components (ball grid arrays with 120 x 120 mm edge length). In these very large applications, individually adapted preheating of the assembly is also gaining in importance for preventing distortion of the circuit board. New component shapes and soldered joint designs are being created.

It also turns out that the “zero defect” goal is not always achievable in production. Despite the best equipment and highly qualified staff, the many influencing factors mean that defects, which creep in, for example, during new product startups, have to be corrected. The flexibility of the rework systems is an important parameter for being able to cover as wide a range of applications as possible. This applies both to desoldering and soldering processes, which must be carried out as universally as possible and without expensive accessories, and also to component placement. In classic repair, components such as BGA, MLF or QFP are desoldered and replaced with new ones. In service use, faulty assemblies are sometimes put into operation simply by resoldering. Although SMT plugs and sockets as well as special designs are challenging, in general they can also be safely processed.

MORE DEVELOPMENTS, MORE SYSTEMS

The development departments of many well-known manufacturers use Ersa Rework Systems for prototyping. New housing shapes or components are assembled and soldered for the first time. In even more frequent cases, initial assemblies are provided with newly programmed or modified components. Even the somewhat more exotic fields of analytics or technical forensics often use rework systems. Cross-over tests during troubleshooting are just as common as the desoldering of memory chips from mobile phones or notebooks to analyze the stored data.

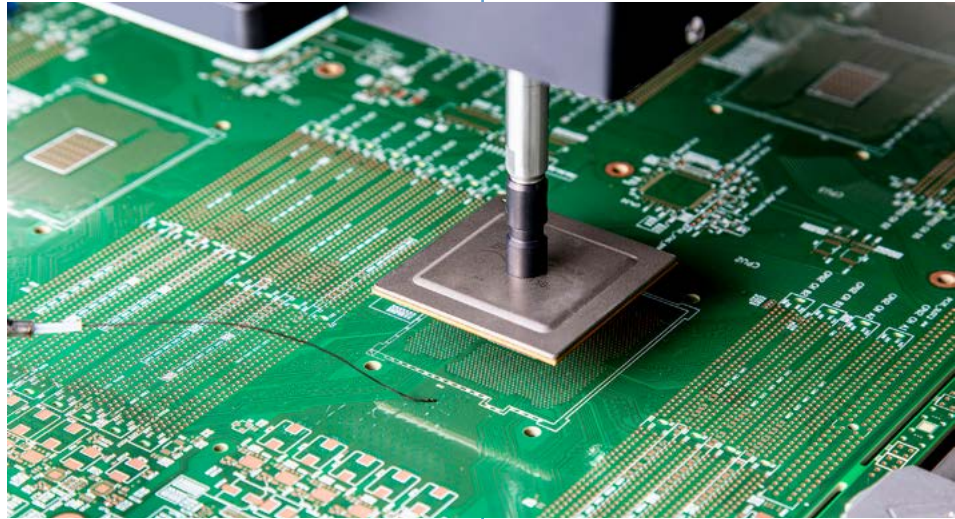
It is therefore only logical that Ersa should expand its product range and offer its customers appropriate systems to choose from in each case. The ideal application field of the units may well overlap in the process. For example, BGA repair tasks of the same quality can be solved equally well with the HR 600/2 and the HR 550. The current rework range covers practically all SMD components such as are installed in smartphones, notebooks, industrial controllers and high-performance server boards. Customers decide which Ersa system suits them best based on their soldering tasks and requirements.

Advantages

Ersa Rework

- Successful repair from the first assembly onwards
- No component-specific nozzles required
- Homogeneous and material-friendly heating technology
- Stable automatic placement and soldering processes
- Easy to operate due to user guidance and uniform software

www.ersa.com



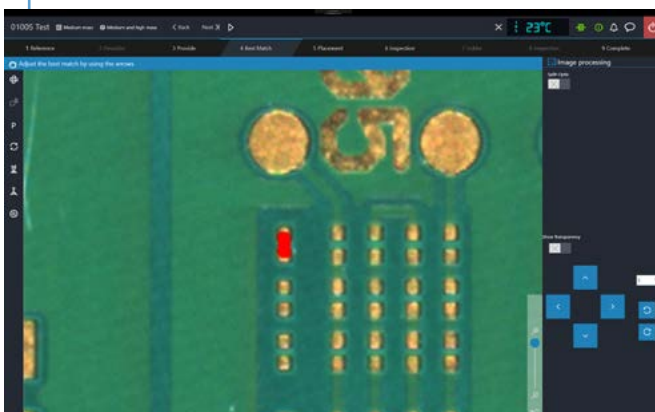
NEW REWORK TIME CALCULATION: AUTOMATIC – FLEXIBLE – REPRODUCIBLE

Ersa hybrid heating technology has been established in the market for several years. The energy input for soldering is a combination of medium-wave infrared radiation and a convection component. Using this technology, assemblies are heated gently and homogeneously. The sensor-guided, closed control loop guarantees precise and repeatable soldering and desoldering processes.

External influences are automatically adjusted and largely compensated. The Ersa heating technology does not require any component-specific nozzles and can therefore be used universally. There are no additional costs or waiting times. Damage to surrounding components by hot gases is excluded; miniature components are not blown away.

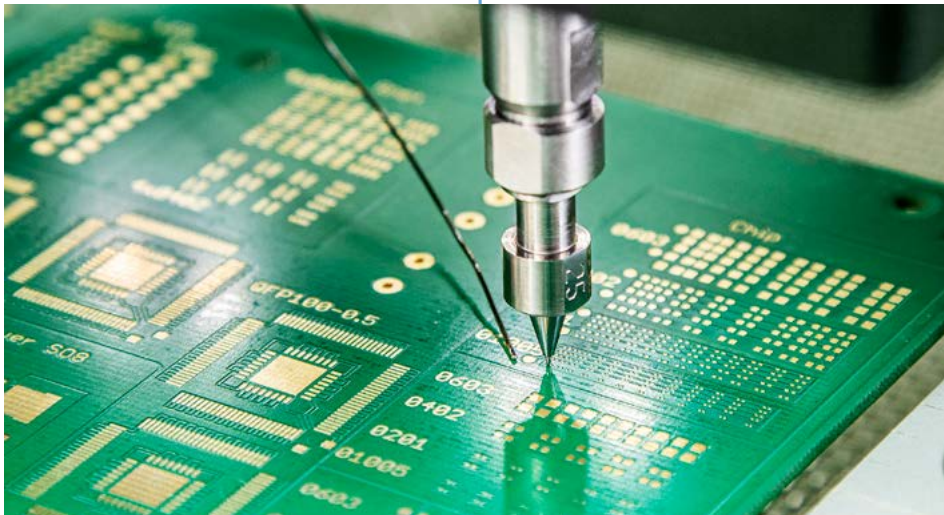
Continuous further development of the technology is reflected in even more efficient heating systems and in the preparation of the connection surfaces. The component connections – for example in the case of BGA, QFP – are automatically immersed in flux or solder paste before soldering. Alternatively, components such as LGA or MLF can also be printed with paste. This results in defined soldered joints which are equal to production quality. In addition to desoldering and soldering processes, the precise placement of multiple-pole components is a fundamental process step. Only minor deviations from the ideal position are permissible. Ersa systems feature automatic placement with image processing or optical systems with excellent image quality for manual alignment. In both cases, the operating software provides practical support for the user while the component is being aligned.

*HRSoft 2 screenshot -
HR 600 XL process visu-
alization with display of
the 25 IR matrix radiators
for segmented, perfectly
coordinated heat output.*



HRSOFT 2: UNIFIED PLATFORM FOR NEW REWORK SYSTEMS

The software package for rework systems has also been further developed and technologically updated. The current HRSoft 2 provides a unified platform for all new rework systems.



Easy operation and clear user guidance are just as much a focus as the small amount of familiarization need to use different Ersa units. New features, like a “Minimap” and the “Click in the image”, shorten the time needed to find the working position in very large assemblies. Scaled crosshairs help to grip components exactly in the middle during the desoldering process. In HR-Soft 2, all process steps and system states are transparent for the user at all times and are extensively documented. Archiving of the process data makes it possible at any time to verify which parameters have been used to process an assembly. Of course, HR-Soft 2 also provides the basis for connecting the units to Manufacturing Execution Systems (MES).

Many manufacturers have now seen for themselves that reworking and repair are part of the manufacturing process. As a result, all process data associated with these steps are just as important as line production data.

Consequently, it is logical to connect rework systems to the existing MES infrastructure. HRSoft 2 can provide the process parameters required by the customer and establish the link to the relevant order.

OVERVIEW:
ERSA HYBRID REWORK FAMILY

The best-selling Ersa IR 550 and the hybrid rework stations HR 100 and HR 200 have already been on the market for many years and have a large fan base. The first automated rework system HR 600/2 and the HR 550 are also already permanent fixtures in the industry. At productonica 2019, Ersa is presenting three brand-new systems for component repair, thus expanding the successful rework product line. The most recent family members are again characterized by technologically interesting aspects in the field of heating and placement technology and now offer customers an even wider choice.

ERSA HYBRID REWORK			
Stations	Systems (with component placement)		
S	M	L	XL
HR 100 HR 200 IR 550 (infrared radiation only)	HR 500 NEW!	HR 550 HR 600/2 HR 600/3P NEW!	HR 550 XL NEW! HR 600 XL

PROCESSES ERSA HYBRID REWORK SYSTEMS	
semi-automatic	automatic
HR 500 NEW! HR 550 HR 550 XL NEW!	HR 600/2 HR 600/3P NEW! HR 600 XL

With the semi-automatic systems, component alignment is carried out by the operator using a vision box, in the case of fully automatic systems, image processing calculates the set-down position and an axis system places the component.

HR 500



HR 500

The new HR 500 offers full Ersa Hybrid Rework technology for budget oriented users. The HR 500's little brother allows flexible repair of standard assemblies up to 380 x 300 mm and 50 x 50 mm component size.



HR 550 XL

HR 550 XL

The semi-automatic HR 550 XL is a real powerhouse with eight bottom radiator heating zones and motorized X/Y fine adjustment as well as motorized component rotation. The system is suitable for industrial and power electronics as well as large-format boards up to 530 x 530 mm and is particularly attractive for service providers.

HR 600/3 P



HR 600/3 P

If you are looking for a system with the highest demands on precision, the HR 600/3P automatically repairs fine pitch components such as μ BGA and the smallest chip components (01005). The high-precision axis system and 5-MPix cameras offer the most precise desoldering and placement technology in rework available today.

HR 600 XL

With its large IR matrix bottom heating, the HR 600 XL features the most innovative heating technology available today. All heating zones of the matrix can be adjusted individually and thus the assembly can be preheated perfectly. The system, equipped with an extra-large heating head, enables the automatic repair of very large circuit boards (up to 625 x 625 mm) and component sizes up to approx. 120 x 120 mm. Applications in the field of telecommunications (5G) are the focus here. ■



HR 600 XL

Ersa GmbH

Leonhard-Karl-Str. 24
97877 Wertheim

Phone: +49 9342 800-0
info@ersa.de
www.ersa.com

Ersa North America
usa@kurtzersa.com

Kurtz Ersa France
kefrance@kurtzersa.com

Ersa Shanghai
info-esh@kurtzersa.com

Ersa Asia Pacific
asia@kurtzersa.com

Kurtz Ersa Mexico
info-kmx@kurtzersa.com

Kurtz Ersa Vietnam
info-kev@kurtzersa.com