

# Kurtz POWERBoard Dynamic Control Tool for Increased OEE



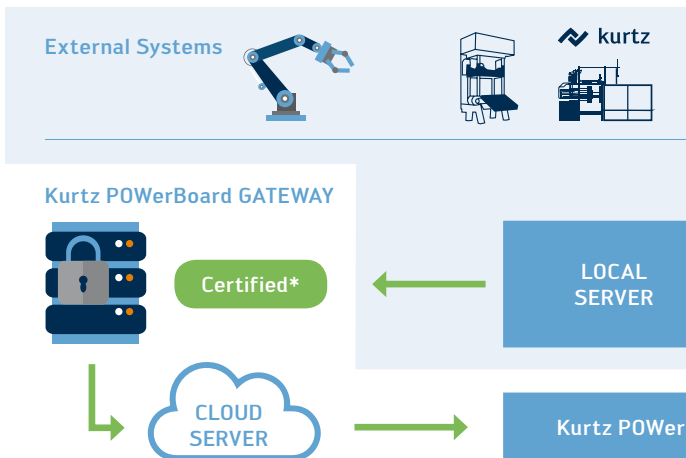
# Kurtz POWERBoard

## Everything at a Glance on the Process Side: more OEE with Industrial IoT

The Industrial Internet of Things (IIoT) is changing our production processes and the entire manufacturing industry. Digitized processes, products and services are creating new levels of efficiency.

Act early and become a pioneer in your field with Kurtz!

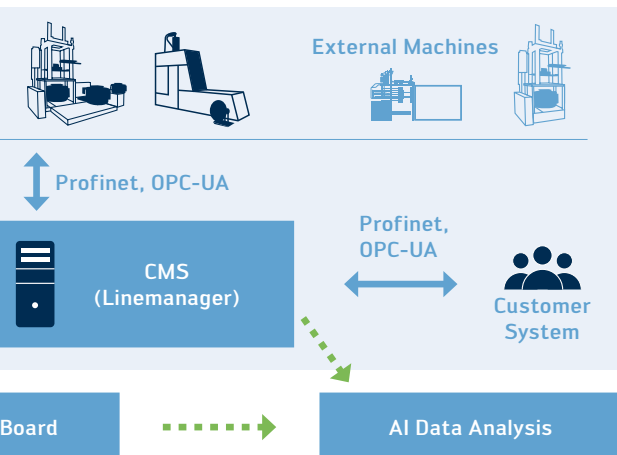
With the brand new digital solution **Kurtz POWERBoard** you can track down different qualities of your produced parts. Apparently identical conditions are based on a variety of influencing variables.



By using sensors on your individual machines and lines, plant data can be continuously collected and analysed. The overall equipment effectiveness (OEE) is calculated permanently on the basis of defined parameters for quality, performance and availability. The performance of your worldwide production sites can also be compared in this way.

Less unscheduled machine downtime, more efficient utilization of the entire machine park and increased service speed are just a few of the numerous advantages for you.

*Kurtz POWERBoard: Productivity Increase, OEE, Worldwide!*





## Cloud System



### Customer Portal

- Machine documentation
- Machine information overview

### Remote Service

- Access to machine for Kurtz Service support

### Downtime Tracking

- Tracking of availability and downtime reasons

### Kurtz Dashboards

- Visualisation of Kurtz specific sub-processes

### Remote Monitoring

- Alert system e.g. for media supply

### Service Request with Ticket System

- Service ticket status accessible to the customer

### Artificial Intelligence (AI)

- Self-learning systems
- Immediate analyses and reports
- Correlation detection

# Kurtz POWerBoard

## Kurtz as a Service

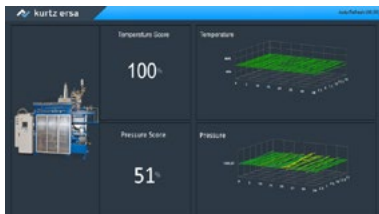
### Kurtz Dashboards



OEE Dashboard



Process Monitoring Temperature & Cooling



Process Monitoring Temperature & Pressure



Service Request with Ticket System



## Kurtz POWERBoard & Kurtz CMS

	POWERBoard	CMS
<b>Data Storage</b>	Cloud	Local (Factory)
<b>Communication</b>	One way (Profinet, OPC-UA) Machine ⇒ CMS ⇒ Cloud ⇒ POWERBoard	Two way (Profinet, OPC-UA) Machine ↔ CMS
<b>Function</b>	<ul style="list-style-type: none"><li>■ Monitoring</li><li>■ Data Analysis</li></ul>	<ul style="list-style-type: none"><li>■ Linemanager</li><li>■ Monitoring</li></ul>
<b>Availability</b>	Worldwide	Factory
<b>Required Software + Hardware</b>	<ul style="list-style-type: none"><li>■ Kurtz POWERBoard Gateway</li><li>■ Web browser</li></ul>	<ul style="list-style-type: none"><li>■ Kurtz CMS Server</li><li>■ Kurtz CMS Client</li></ul>
<b>Data Transfer</b>	No realtime	Realtime
<b>Available Modules</b>	<ul style="list-style-type: none"><li>■ Kurtz Dashboards</li><li>■ Downtime-Tracking</li><li>■ Remote Service</li><li>■ Customer Portal</li><li>■ Service Request with Ticket System</li></ul>	<ul style="list-style-type: none"><li>■ Machine Monitoring</li><li>■ Media Monitoring</li><li>■ Data Logger</li><li>■ Steam Management System</li></ul>
<b>Planned Modules</b>	<ul style="list-style-type: none"><li>■ Predictive Maintenance Analysis</li><li>■ Alert System for Media Supply</li></ul>	<ul style="list-style-type: none"><li>■ Recipe and Mould Database</li></ul>